

Dam: Craigbourne

Country Australia

River Coal

42°33'23.82"S 147°24'16.99"E

-42.556557 147.404709

Owner/Client Rivers and Water Supply Commission of Tasmania

Designer/Engineer Gutteridge Haskins & Davey

Contractor Roche Bros Pty Ltd

Purpose (code) I W

Site start 01.01.1986

RCC start 29.04.1986

RCC completion 26.06.1986

Site completion 31.08.1986

Height (m) 25

Length (m) 247

Volume of RCC ($m^3 \times 10^3$) 22

Total volume ($m^3 \times 10^3$) 24

Reservoir capacity ($m^3 \times 10^6$) 13

Upstream slope V

Forming of upstream face (code) (7)

Downstream slope 1.00

Forming of downstream face (code) (17)

Spillway slope separate

Forming of spillway face (code) *Unknown*

Depth of layers (mm) 300

Depth of lifts (mm) 300

Cement content (kg/m^3) 70

Pozzolan content (kg/m^3) 60

Code for pozzolan (F)

RCCDAM Unique Serial No. RCCDAM0023

Under Construction



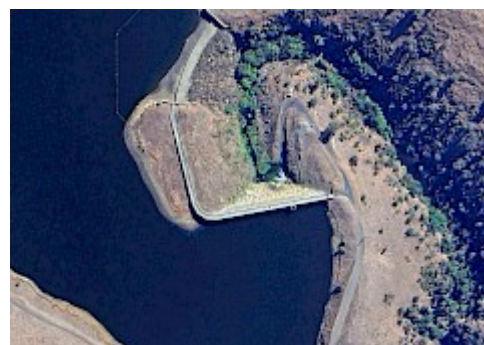
RCCDAM0023UC

Completed Dam



RCCDAM0023CD

Google Earth



RCCDAM0023GE

Guide to Abbreviations

Purpose

- E Environmental
- F Flood control
- G Groundwater recharge
- H Flood control
- I Irrigation
- N Navigation
- P Pollution control
- R Recreation
- W Water supply

Facing method

- (1) Traditional concrete against formwork
- (2) Traditional concrete against formwork with external geomembrane
- (3) RCC against formwork
- (4) RCC against formwork with external geomembrane
- (5) Traditional concrete against precast concrete panels
- (6) Traditional concrete against precast concrete panels with geomembrane
- (7) RCC against precast concrete panels
- (8) RCC against precast concrete panels with geomembrane
- (9) RCC against precast concrete panels with hot poured membrane
- (10) RCC against precast concrete blocks
- (11) Reinforced conventional concrete cast before RCC placement
- (12) Reinforced conventional concrete cast after RCC placement
- (13) Reinforced concrete cast against precast units or slip-formed facing elements
- (14) Slip-formed/extruded facing elements
- (15) RCC supported by fill shoulders
- (16) Mechanically compacted unformed face of RCC
- (17) Unformed face of RCC
 - ' GEVR/GE-RCC
 - * Stepped face

Pozzolans

- (-) No Pozzolan Used
- (C) High-lime flyash (ASTM Class C)
- (F) Low-lime flyash (ASTM Class F)
- (M) Milled sand
- (N) Natural pozzolan (ASTM Class N)
- (R) ROLAC (mixture of flyash and slag with or without limestone fines)
- (S) Ground-granulated blast-furnace slag
- (L) Mixture of GGBFS and limestone fines