

Dam:

Country

River

Owner/Client

Designer/Engineer

Contractor

Purpose (code)

Site start

RCC start

RCC completion

Site completion

Height (m)

Length (m)

Volume of RCC ($m^3 \times 10^3$)

Total volume ($m^3 \times 10^3$)

Reservoir capacity ($m^3 \times 10^6$)

Upstream slope

Forming of upstream face (code)

Downstream slope

Forming of downstream face (code)

Spillway slope

Forming of spillway face (code)

Depth of layers (mm)

Depth of lifts (mm)

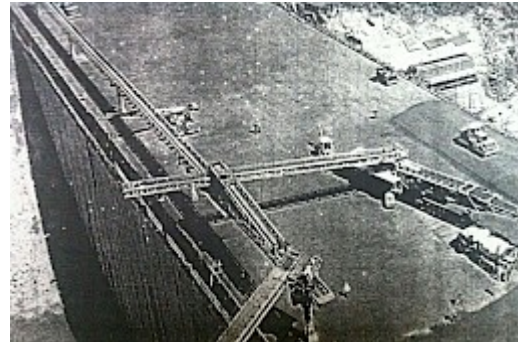
Cement content (kg/m^3)

Pozzolan content (kg/m^3)

Code for pozzolan

RCCDAM Unique Serial No.

Under Construction



RCCDAM0168UC

Completed Dam



RCCDAM0168CD

Google Earth



RCCDAM0168GE

Guide to Abbreviations

Purpose

- E Environmental
- F Flood control
- G Groundwater recharge
- H Flood control
- I Irrigation
- N Navigation
- P Pollution control
- R Recreation
- W Water supply

Facing method

- (1) Traditional concrete against formwork
- (2) Traditional concrete against formwork with external geomembrane
- (3) RCC against formwork
- (4) RCC against formwork with external geomembrane
- (5) Traditional concrete against precast concrete panels
- (6) Traditional concrete against precast concrete panels with geomembrane
- (7) RCC against precast concrete panels
- (8) RCC against precast concrete panels with geomembrane
- (9) RCC against precast concrete panels with hot poured membrane
- (10) RCC against precast concrete blocks
- (11) Reinforced conventional concrete cast before RCC placement
- (12) Reinforced conventional concrete cast after RCC placement
- (13) Reinforced concrete cast against precast units or slip-formed facing elements
- (14) Slip-formed/extruded facing elements
- (15) RCC supported by fill shoulders
- (16) Mechanically compacted unformed face of RCC
- (17) Unformed face of RCC
 - ' GEVR/GE-RCC
 - * Stepped face

Pozzolans

- (-) No Pozzolan Used
- (C) High-lime flyash (ASTM Class C)
- (F) Low-lime flyash (ASTM Class F)
- (M) Milled sand
- (N) Natural pozzolan (ASTM Class N)
- (R) ROLAC (mixture of flyash and slag with or without limestone fines)
- (S) Ground-granulated blast-furnace slag
- (L) Mixture of GGBFS and limestone fines