

Dam: Qedusizi (formerly Mount Pleasant)

Country South Africa

River Klip

28°32'30.97"S 29°44'41.08"E

-28.541937 29.744743

Owner/Client Department of Water & Sanitation

Designer/Engineer Department of Water Affairs & Forestry

Contractor Department of Water Affairs & Forestry

Purpose (code) F

Site start 01.04.1994

RCC start 09.03.1995

RCC completion 31.08.1997

Site completion 31.03.1998

Height (m) 28

Length (m) 490

Volume of RCC ($m^3 \times 10^3$) 78

Total volume ($m^3 \times 10^3$) 156

Reservoir capacity ($m^3 \times 10^6$) 128

Upstream slope V

Forming of upstream face (code) (1)

Downstream slope V
0.70

Forming of downstream face (code) (1)
(1) *

Spillway slope 0.70

Forming of spillway face (code) (1) *

Depth of layers (mm) 250

Depth of lifts (mm) 250

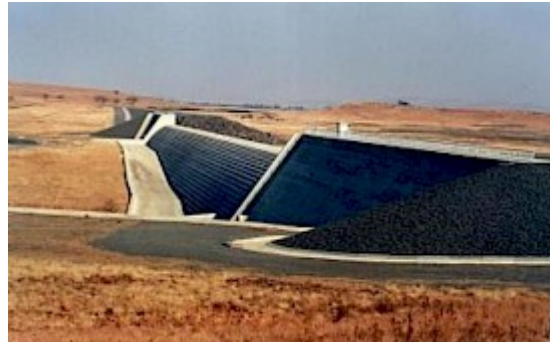
Cement content (kg/m^3) 46

Pozzolan content (kg/m^3) 108

Code for pozzolan (S)

RCCDAM Unique Serial No. RCCDAM0186

Completed Dam



RCCDAM0186CD

Google Earth



RCCDAM0186GE

Guide to Abbreviations

Purpose

- E Environmental
- F Flood control
- G Groundwater recharge
- H Flood control
- I Irrigation
- N Navigation
- P Pollution control
- R Recreation
- W Water supply

Facing method

- (1) Traditional concrete against formwork
- (2) Traditional concrete against formwork with external geomembrane
- (3) RCC against formwork
- (4) RCC against formwork with external geomembrane
- (5) Traditional concrete against precast concrete panels
- (6) Traditional concrete against precast concrete panels with geomembrane
- (7) RCC against precast concrete panels
- (8) RCC against precast concrete panels with geomembrane
- (9) RCC against precast concrete panels with hot poured membrane
- (10) RCC against precast concrete blocks
- (11) Reinforced conventional concrete cast before RCC placement
- (12) Reinforced conventional concrete cast after RCC placement
- (13) Reinforced concrete cast against precast units or slip-formed facing elements
- (14) Slip-formed/extruded facing elements
- (15) RCC supported by fill shoulders
- (16) Mechanically compacted unformed face of RCC
- (17) Unformed face of RCC
 - ' GEVR/GE-RCC
 - * Stepped face

Pozzolans

- (-) No Pozzolan Used
- (C) High-lime flyash (ASTM Class C)
- (F) Low-lime flyash (ASTM Class F)
- (M) Milled sand
- (N) Natural pozzolan (ASTM Class N)
- (R) ROLAC (mixture of flyash and slag with or without limestone fines)
- (S) Ground-granulated blast-furnace slag
- (L) Mixture of GGBFS and limestone fines