

Dam: Shuidong

Country: China

River: Youxi

DMS Co-ordinates: Unknown

DD Co-ordinates: Unknown

Owner/Client: Fujian Shuikou Power Generation Group

Designer/Engineer: Fujian Institute of Investigation and Design of Water Conservancy and Electric Power

Contractor: Fujian (Minjiang) Construction Bureau

Purpose (code): H N

Site start: 23.04.1991

RCC start: 15.11.1992

RCC completion: 31.10.1993

Site completion: 30.12.1995

Height (m): 63

Length (m): 197

Volume of RCC ( $m^3 \times 10^3$ ): 126

Total volume ( $m^3 \times 10^3$ ): 184

Reservoir capacity ( $m^3 \times 10^6$ ): 108

Upstream slope: V

Forming of upstream face (code): (7)

Downstream slope: 0.75

Forming of downstream face (code): (10)

Spillway slope: 0.75

Forming of spillway face (code): (1)

Depth of layers (mm): 300

Depth of lifts (mm): 300

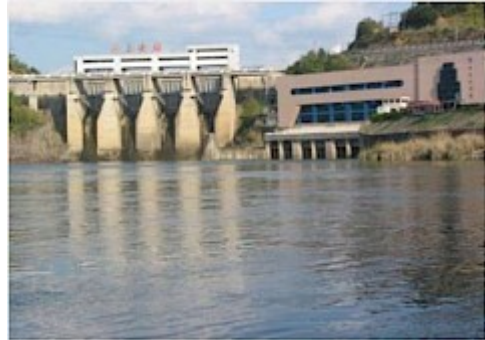
Cement content ( $kg/m^3$ ): 50

Pozzolan content ( $kg/m^3$ ): 90

Code for pozzolan: (F)

RCCDAM Unique Serial No.: RCCDAM0124

### Completed Dam



RCCDAM0124CD

# Guide to Abbreviations

## Purpose

- E Environmental
- F Flood control
- G Groundwater recharge
- H Flood control
- I Irrigation
- N Navigation
- P Pollution control
- R Recreation
- W Water supply

## Facing method

- (1) Traditional concrete against formwork
- (2) Traditional concrete against formwork with external geomembrane
- (3) RCC against formwork
- (4) RCC against formwork with external geomembrane
- (5) Traditional concrete against precast concrete panels
- (6) Traditional concrete against precast concrete panels with geomembrane
- (7) RCC against precast concrete panels
- (8) RCC against precast concrete panels with geomembrane
- (9) RCC against precast concrete panels with hot poured membrane
- (10) RCC against precast concrete blocks
- (11) Reinforced conventional concrete cast before RCC placement
- (12) Reinforced conventional concrete cast after RCC placement
- (13) Reinforced concrete cast against precast units or slip-formed facing elements
- (14) Slip-formed/extruded facing elements
- (15) RCC supported by fill shoulders
- (16) Mechanically compacted unformed face of RCC
- (17) Unformed face of RCC
  - ' GEVR/GE-RCC
  - \* Stepped face

## Pozzolans

- (-) No Pozzolan Used
- (C) High-lime flyash (ASTM Class C)
- (F) Low-lime flyash (ASTM Class F)
- (M) Milled sand
- (N) Natural pozzolan (ASTM Class N)
- (R) ROLAC (mixture of flyash and slag with or without limestone fines)
- (S) Ground-granulated blast-furnace slag
- (L) Mixture of GGBFS and limestone fines